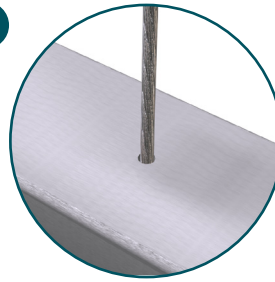


Aluminium frame - Steel cable + standard ceiling attachment



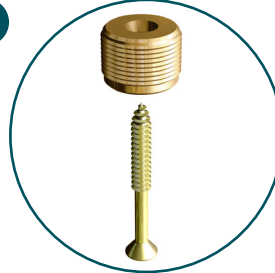
Frame option code: SS2-1-

1



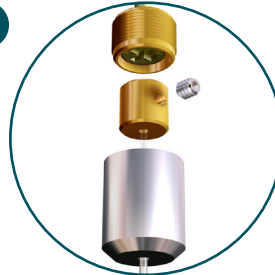
Feed the cable through the top edge of the frame locating end stop ferrule in centre groove of the frame, slide sign(s) in place through the side entrance aperture.

2



Using a suitable fixing for the ceiling type, secure the brass holder to the ceiling substrate.

3



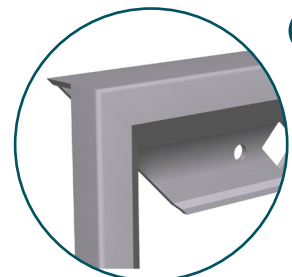
Feed the cable through ceiling cap and into brass cable clamp securing with grub screw. Thread cap over the brass holder concealing the fixture.

Aluminium frame - Wall mounted



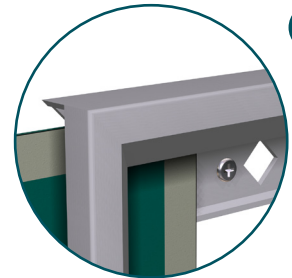
Frame option code: SS2-3-

1



Position and level the frame on the wall marking fixing holes.

2



Using suitable fixings secure frame to the wall, slide sign in place through the side entrance aperture.